

## SILVER HARBOUR Conservation Area

Lake Superior offers infinite recreation possibilities and Silver Harbour is the ticket to this natural playground of Northern Ontario. One of the many sites which were explored for silver in the Thunder Bay area in the 1800's. Silver Harbour offers public access to Lake Superior.

*Boaters will appreciate the two concrete boat launches and three fixed courtesy docks. Lake Superior has good fishing for Salmon and Lake Trout.*



## HAZELWOOD LAKE Conservation Area

Hazelwood Lake is one of the closest inland lakes to the City of Thunder Bay. Located only 25 minutes from the City, this large, semi-wilderness area is perfect for full day family outings. Enjoy a refreshing swim at the unsupervised beach, a relaxing picnic and BBQ or a leisurely walk along one of the many trails.



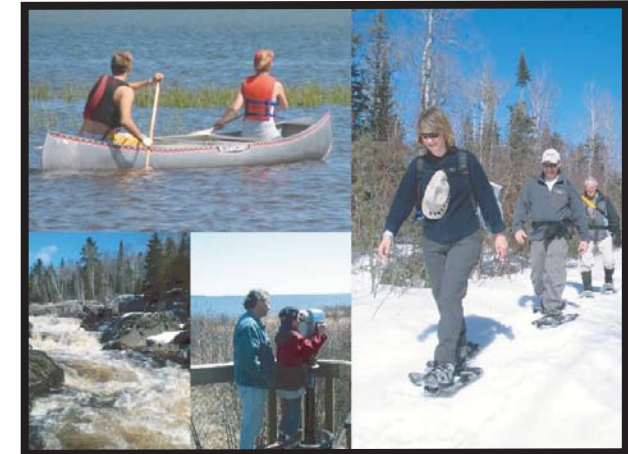
*Hazelwood Lake features excellent fishing and canoeing. Non-gas powered motors, such as battery or electric powered motors are permitted.*

## VISITOR FACILITIES

Lakehead Region Conservation Areas and Lands	Parking Lot	Picnic Tables	Pavilion	Barbecue Grills	Nature Viewing Facilities	Boat Launch Ramp	Canoe Launch Site	Trails	Interpretive Nature Trails	Interpretive Facilities	Snowshoeing	Outdoor Privies	Land Area (hectares)	Directions			
														N=north	S=south	E=east	W=west
Cascades C.A. *													162	Located at the north end of Balsam St., 3 km N of Hwy 17			
Cedar Falls C.A.													23	Hwy 17 W to Hwy 590, turn left (W). 3 km W, then S (left) at Garbutt Rd. Go 3 km S to Broome Rd. Turn left (E), go to end of road			
Hazelwood Lake C.A. *													618	Dawson Rd. (Hwy 102) 3km W of Hwy 17, then N on Hazelwood Dr. for 14 km			
Hurkett Cove C.A.													125	Hwy 17 E past Dorion and Wolf River. Turn right (S) at Black Bay Rd.; 3 km dirt road			
Little Trout Bay C.A.													18	Hwy 61 S, turn left (E) at Little Trout Bay Road. 5 km to Conservation Area			
MacKenzie Point C.A.													1	Lakeshore Dr. E almost to Hwy 17. Right (S) at Coral Beach Rd.; left after tracks			
Mission Island Marsh C.A. *													292	Take Main St. or Pacific Ave. East to Island Drive. Turn right and continue to 106 St. Turn left and continue to parking lot.			
Silver Harbour C.A.													47	Lakeshore Dr. to Silver Harbour Rd.; S for 2 km on Silver Harbour Rd.			

*\* These Conservation Areas feature four seasons access with limited features available in winter. Pavilions may be reserved at a nominal fee for private or group picnics. Call 344-5857 for details.*

# EXPLORE the Lakehead's Conservation Areas



Four Seasons of Fun!

## CEDAR FALLS Conservation Area

Cedar Falls features a scenic waterfall and rocky outcroppings nestled in a rich green forest of coniferous and deciduous trees. Popular for fishing, picnics or relaxing in the shade.

Located at the east end of Broome Road in O'Connor Township.



## HAZELWOOD LAKE CENTRE

Hazelwood Lake Centre is a multi-purpose facility at Hazelwood Lake Conservation Area. The Centre is available for rental from May to October for a variety of group functions such as meetings, receptions and reunions. The Centre also serves as a special event location or conservation education Centre.



*Hazelwood Centre can accommodate up to 130 people. Call 344-5857.*

## EXCITING & NATURAL Conservation Areas

A great way to improve your health is through regular exercise and a healthy diet. One simple way to get exercise is by walking or hiking. Hiking helps to reduce or prevent the risk of heart disease, diabetes and stress as well as helping to improve weight control. Plus, ***It's not work, when it's fun!***

**EXCITING  
&  
Natural**

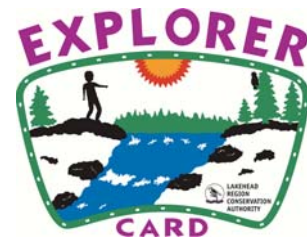
Sure, you can walk around the block, but a visit to any of our Conservation Areas will make your next walk or hike an ***Exciting and Natural*** experience! Visit a location near you to discover hiking, canoeing, bird watching and other recreation opportunities today!

## VISITOR FEES

Where coin boxes are provided, there is a \$2/vehicle visitor fee at Conservation Areas.

Where facilities are provided this includes ramp fees for launching boats.

Purchase an annual Explorer Card for \$25 and forgo the \$2 fee.



Cards are valid for a full calendar year and are available from the LRCA Office.

Fees collected at Conservation Areas are used to meet operating expenses and to maintain hiking trails, outdoor recreation opportunities and wildlife habitat.

## A NOTE ABOUT REGULATIONS

The Lakehead Region Conservation Authority spends considerable time, energy and money maintaining and upgrading Conservation Areas. As visitors to these areas, we ask that you help keep Conservation Areas clean and respect the visitor facilities that are provided.

- ~ Hours of Operation: 7:00 a.m. to 11:00 p.m.
- ~ areas are Day-use only; no overnight camping or parking
- ~ no overnight mooring at docks
- ~ no campfires
- ~ obey signs where posted
- ~ deposit litter in containers provided
- ~ pets are welcome but must be kept on a leash at all times
- ~ pick up all pet droppings and dispose in trash containers
- ~ no bicycles or motorized vehicles on trails



Conserve today...  
for a better tomorrow

**Lakehead  
Region  
Conservation  
Authority**

www.lakeheadca.com

## MISSION ISLAND MARSH

### Conservation Area

The largest marsh on Thunder Bay's waterfront is home to a wide variety of ducks, geese and songbirds. Also watch for Peregrine Falcons and Bald Eagles. Stroll the boardwalk for a closer look at the aquatic vegetation or observe marsh life from the viewing mound.

Mission Island Marsh features an interpretive pavilion, picnic tables and walking trails. Excellent views of Sleeping Giant and Pie Island.



## DIRECTIONS

### to Mission Island Marsh

Travel east on Main St. or Pacific Ave. and then south on Island Dr. Cross the bridge to the islands and continue on Island Dr. to Mission Island. Turn left on 106th St. and follow it to the end.

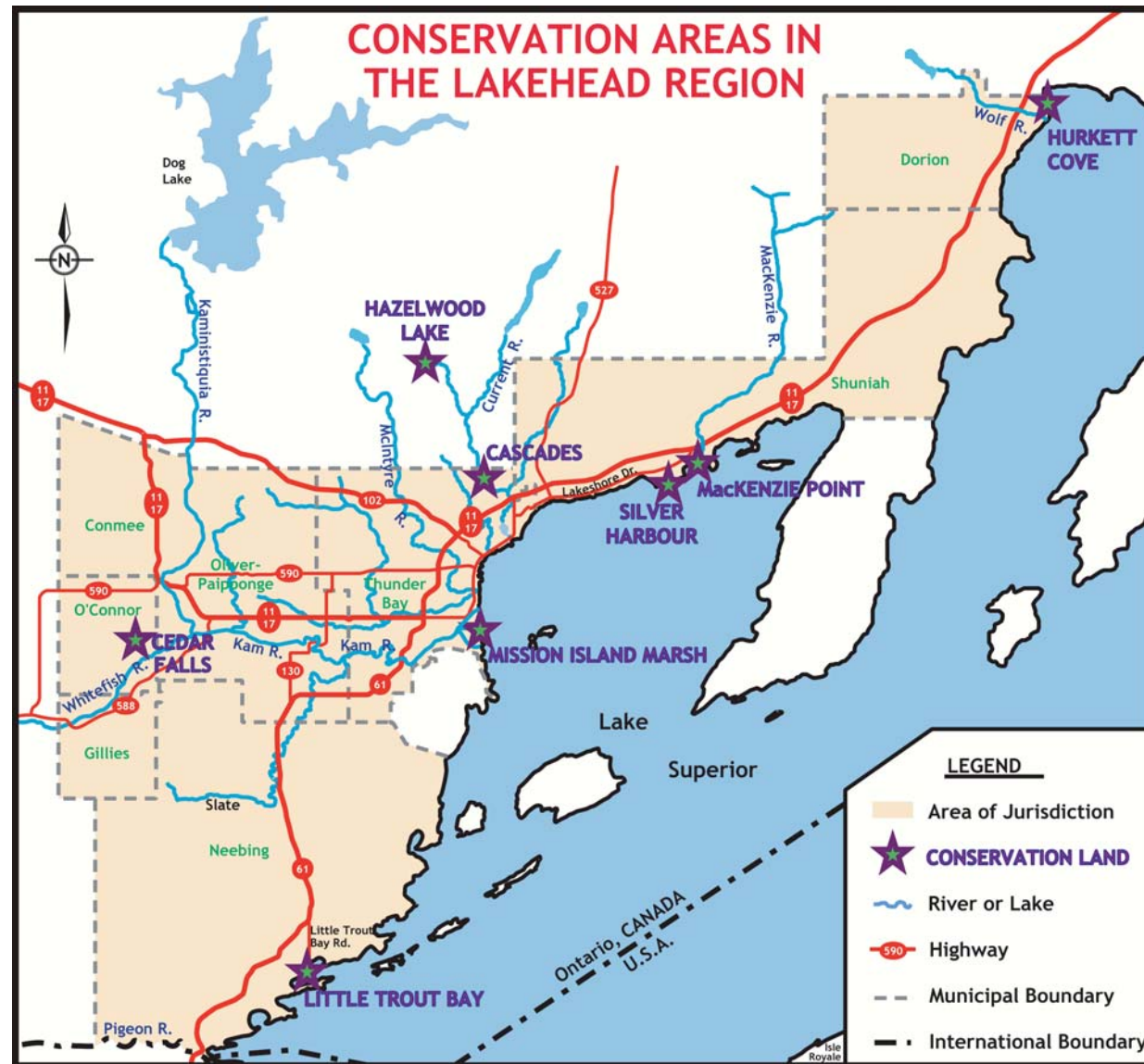


## MacKenzie Point Conservation Area

One of four Conservation Areas on Lake Superior, MacKenzie Point offers a magnificent view of the lake and off shore islands. It occupies the very tip of a peninsula extending into MacKenzie Bay. The site is primarily a rock outcrop that gently slopes into the water.



## CONSERVATION AREAS IN THE LAKEHEAD REGION



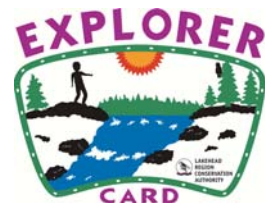
Area of Jurisdiction covers 2,600 sq. km., including 8 member municipalities and extending along 200 km of Lake Superior Shoreline

City of Thunder Bay  
Municipality of Neebing

Municipality of Shuniah  
Municipality of Oliver Paipooonge

Township of Conmee  
Township of Dorion

Township of Gillies  
Township of O'Connor



\$2/vehicle daily fee or purchase an annual Explorer Card for local Conservation Areas for just \$25. Available at the LRCA Office

## CASCADES

### Conservation Area

The Current River tumbles down a long set of rapids over ancient rock with a backdrop of a poplar, birch and conifer forest. 5 km of trails provide opportunities for hikers of all abilities. Facilities include an open air interpretive pavilion, picnic tables, trail maps and an accessible loop.

The pavilion houses interpretive displays on Cascades' geology and forest and watersheds, as well as a map of the trail network.



## LITTLE TROUT BAY

### Conservation Area

Sparkling waters, a rugged landscape and tree-clad coasts are just some of the sights at Little Trout Bay Conservation Area. The boat launch provides public access to Lake Superior south of the City of Thunder Bay. Excellent fishing for salmon, pickerel, whitefish, rainbow trout and lake trout.

Facilities at Little Trout Bay include a concrete boat launch, open air pavilion, picnic tables, BBQ grills and walking trails.



## HURKETT COVE

### Conservation Area

Located along the Great Lakes Heritage Coast, Hurkett Cove has been named one of the top birding locations in all of Ontario. Relax at the picnic area by the sandy beach, canoe along the shore to see aquatic plants in the shallow water, or hike the 1-km trail for a view into the Cove.

Hurkett Cove is located 80-km east of Thunder Bay on Highway 11-17. Just east of Dorion and the Wolf River, turn right onto Black Bay Road.



## ABOUT the LAKEHEAD REGION CONSERVATION AUTHORITY

The objectives of the Lakehead Region Conservation Authority (LRCA) are to establish and undertake programs that further the conservation, restoration, development and management of renewable natural resources.

Our water management efforts are designed to prevent loss of life and minimize property damage from flooding and erosion, as well as conserve water resources. The Neebing-McIntyre Floodway, completed in 1984, protects the Intercity area from flooding and is a community recreational resource. Major erosion control works on the Kaministiquia River stabilize the riverbank near homes in the area of Broadway Avenue and Victor Street.

The LRCA monitors river conditions and weather forecasts as part of our flood forecasting role. Flood warnings may be issued if flooding seems a possibility. Through floodplain management, the Authority regulates development near watercourses to prevent past development mistakes from happening again.

The LRCA receives funding from many sources including our member municipalities and the Province of Ontario for our water management programs. Community partners, special grants, user-fees and employment funding programs also contribute to certain projects, such as the operation of Conservation Areas.

For further information, contact:

**Lakehead Region Conservation Authority**  
P.O. Box 10427, 130 Conservation Road  
Thunder Bay, ON, P7B 6T8  
Telephone: (807) 344-5857  
Fax: (807) 345-9156  
Internet: [www.lakeheadca.com](http://www.lakeheadca.com)  
Email: [info@lakeheadca.com](mailto:info@lakeheadca.com)